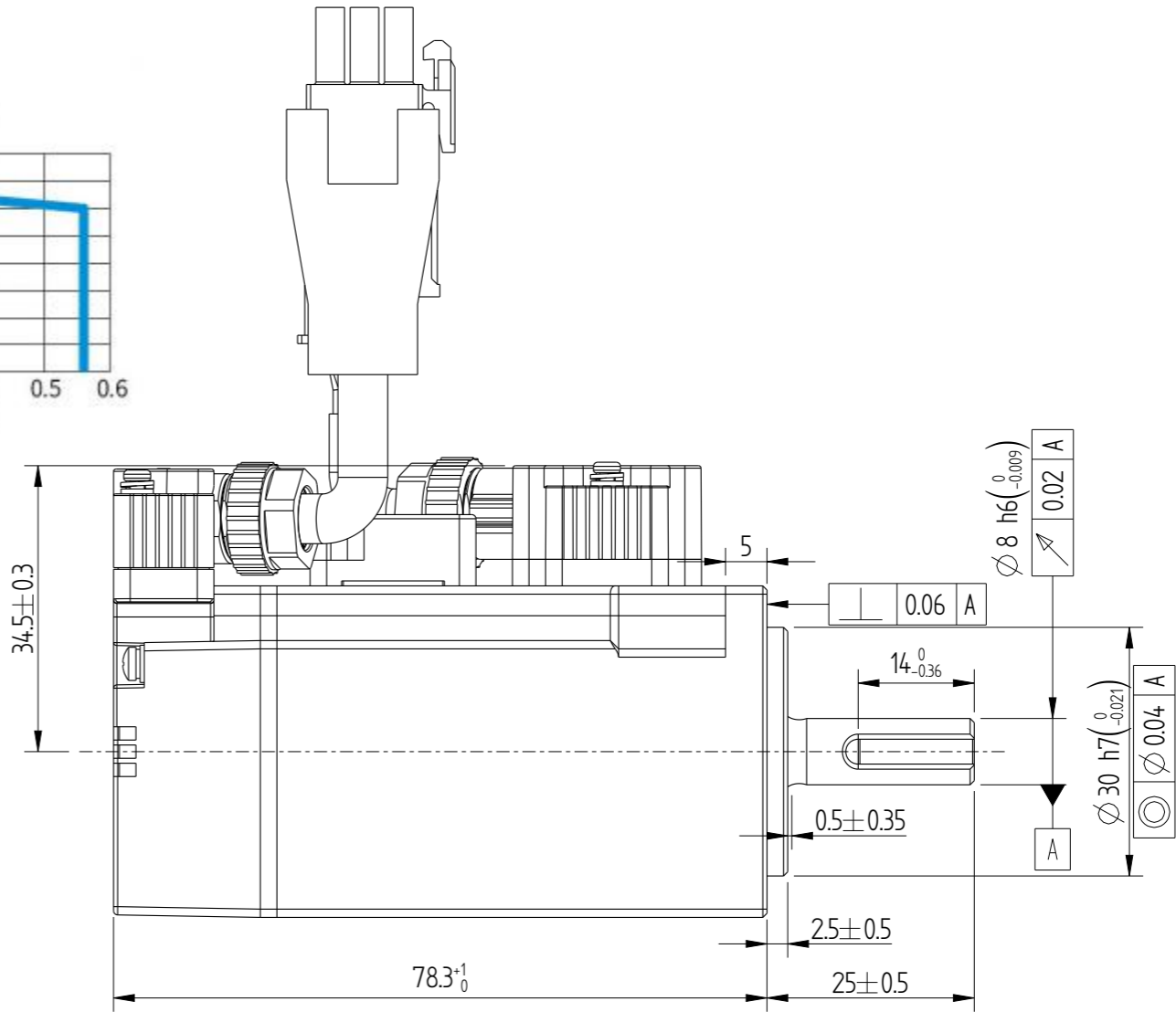
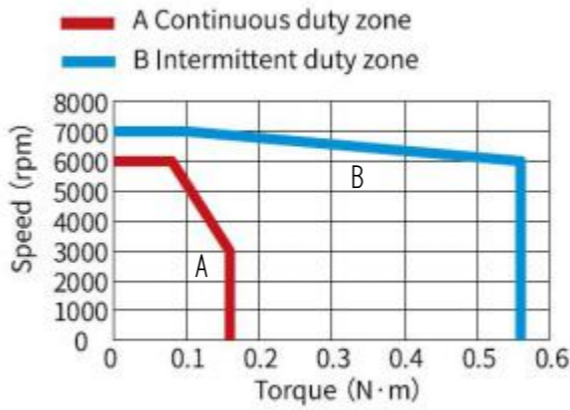
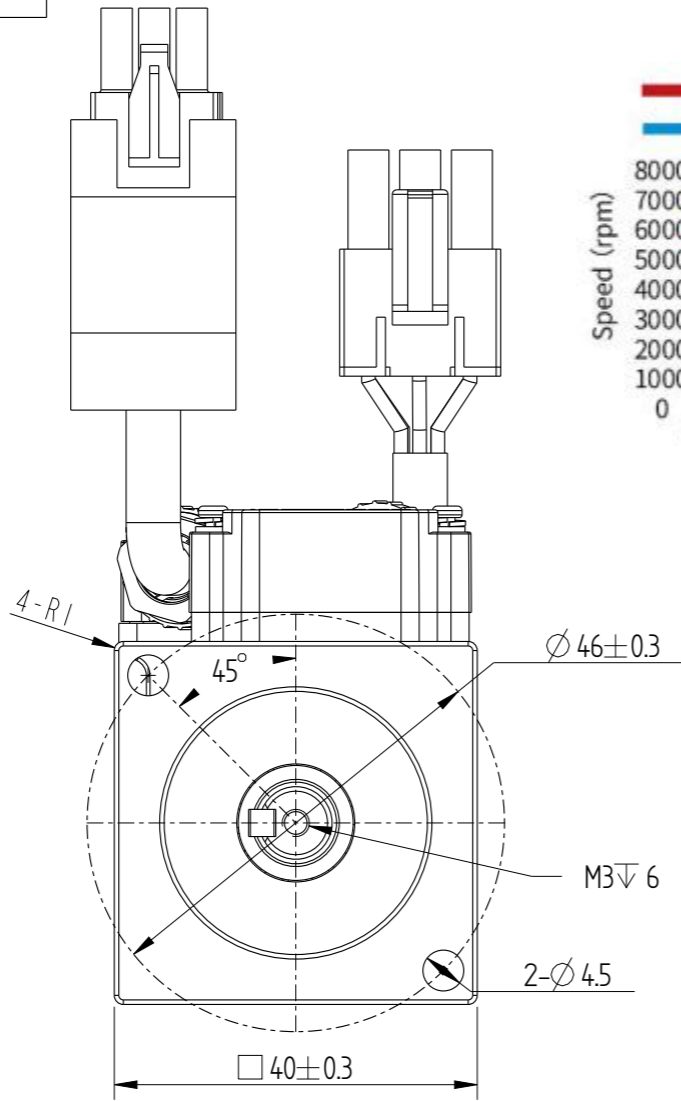


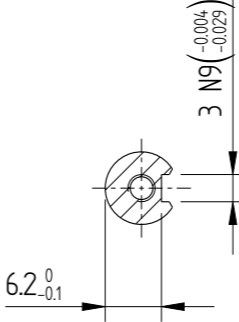
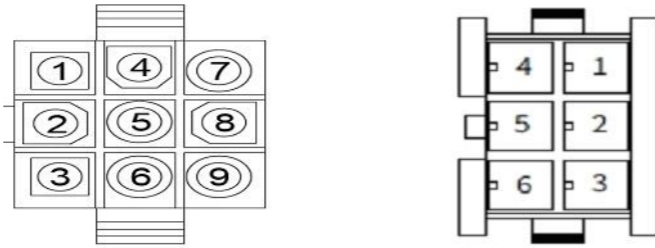
A3

Amendment	Description

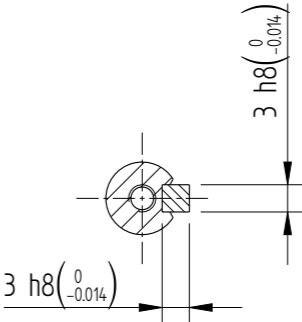
Unit: Millimeter (mm)



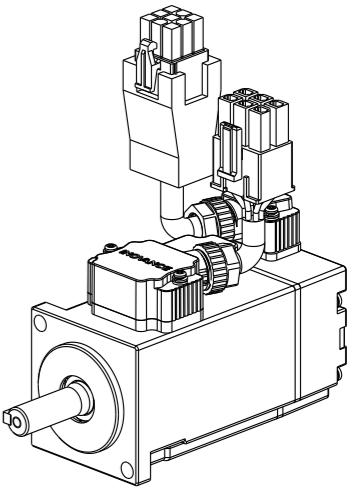
Encoder adapter connector    Power wire adapter connector



Dimension of shaft end



Dimension of shaft end with key

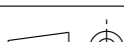


Basic function parameters	
Rated power kW	0.05
Rated voltage V	220
Rated current A	1.27
Peak current at rated speed A	4.78
Rated torque Nm	0.16
Peak torque at rated speed Nm	0.56
Rated speed rpm	3000
Max speed rpm	7000
Rotor inertia kg·cm <sup>2</sup>	0.04±10%
Encoder resolution	23bit
Insulation class	F(155)
Protection class	IP67
Static torque of brake Nm	≥0.32
Brake power supply V	DC24±10%
Brake backlash°	≤15
Duty cycle	S1
Radial load N	≤78
Axial load N	≤54

Encoder adapter connector							
7pin termina	1	4	3	6	9	8	7
Core color	blue	blue black	yellow	yellow black	red	black	Ground wire
definition	DC+	DC-	PS+	PS-	+5V	0V	shield
	Pair		Pair		Pair		

Power wire adapter connector						
6pin terminal	5	4	2	1	3	6
Core color	chartreuse	red	black	white	brown	blue
definition	PE	W	V	U	BK+	BK-

note:1, The lead wire cable length about 300±20mm.

				Motor Outline Drawing			0111A187-WX	
B01	Replace	/	20250530					
Version	Change method	Changed by	Date					
Design	/			/			Mark	
Check	/							
Craft	/							
Verify	/							
Standardization	/			Weight	Scale	Version	Page 1 of 1	
Approve	/			0.4kg	12	B01	Model	MS1H4-05B30CB-A332R-S-INT